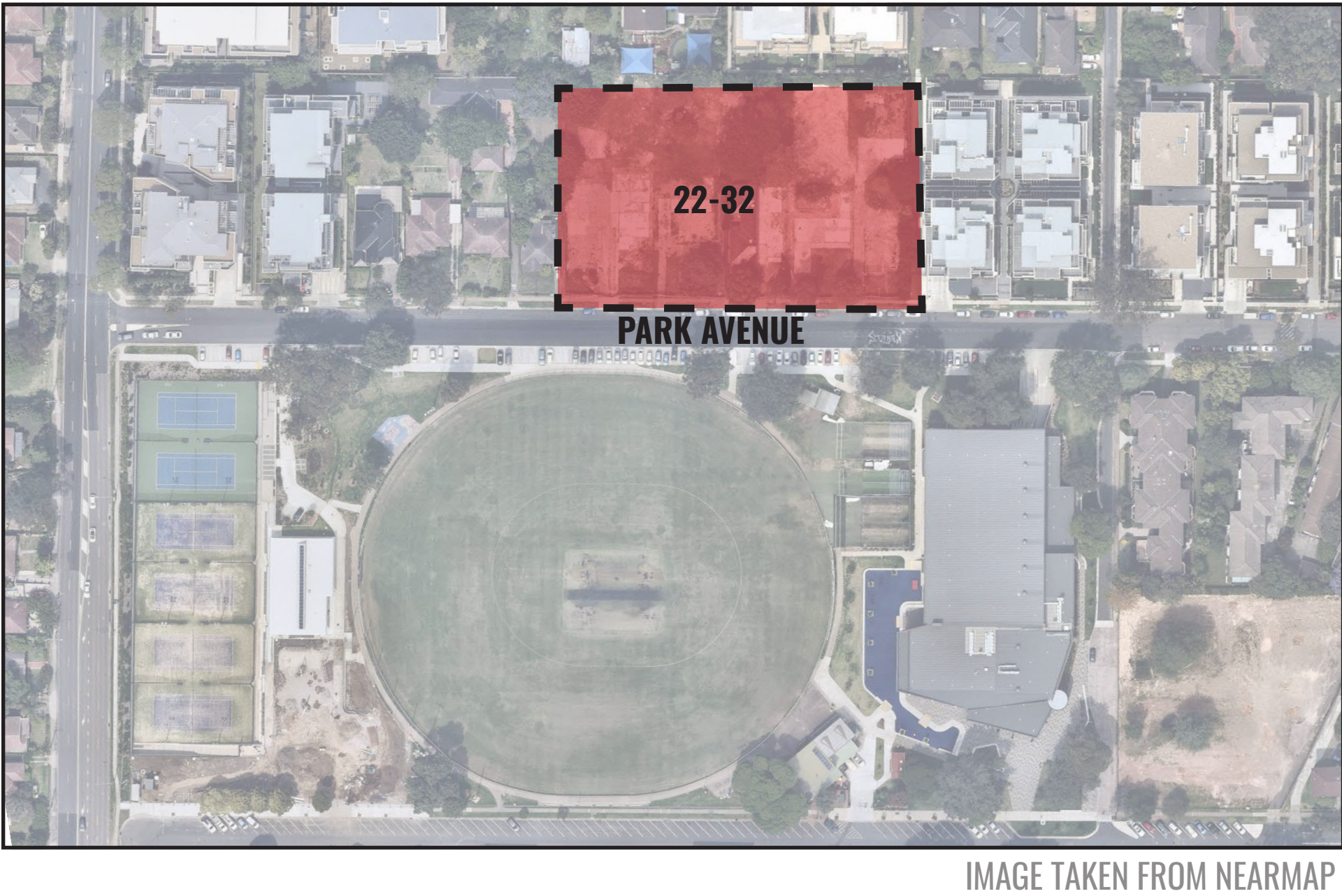


22-32 Park Ave, Waitara NSW 2077

Landscape Documentation for Development Application



Drawing Register

Dwg No.	Drawing Name
LDA-00	Landscape Overall Development Plan
LDA-01	Landscape Plan - Ground Floor
LDA-02	Landscape Plan & Elevation - Ground Floor Communal area
LDA-03	Landscape Detailed Plan - Ground Floor
LDA-04	Landscape Detailed Plan - Ground Floor Communal area
LDA-05	Landscape Detailed Plan - Level 5
LDA-06	Landscape Details & Specifications
LDA-07	Planting Schedule & Imagery




Drawing Title:
Landscape Overall Development Plan

DWG No: LDA-00

GEOSCAPES
LANDSCAPE ARCHITECTS
Suite 215, 284 Victoria Av, Chatswood NSW 2067 Ph. (02) 9411 1485
www.geoscapes.com.au
ABN 84 620 205 781 ACN 620 205 781

Architect:
ALEKSANDAR
PROJECTS

Client:
STATEWIDE
PLANNING

Scale: N/A Date: 26.03.2021 Job Number: 181101 North: 
Project: 22-32 Park Avenue Waitara, NSW 2077

Revision			FOR DEVELOPMENT APPLICATION	
Rev	Date	Description	Drawn	Checked
G	09.03.21	REVISED DA	KC	BG
H	24.03.21	REVISED DA	KC	BG
I	25.03.21	REVISED DA	KC	BG
J	26.03.21	REVISED DA	KC	BG



- LEGEND**
- SITE BOUNDARY
 - PROPOSED TREES
 - PROPOSED PALMS
 - PROPOSED HEDGING
 - PROPOSED SHRUBS / ACCENTS
 - GRASSES / GROUNDCOVERS
 - SIR WALTER BUFFALO TURF
 - TURFED SWALE
 - RETAINING WALL
 - PLANTER WALL
 - TIMBER BATTEN SCREEN
 - LINE OF BASEMENT
 - STEPS TO DECK
 - BLUSTONE PAVING
 - DECK
 - DECO GRAVEL PATH
 - TIMBER SEAT
 - EXISTING LEVEL
 - PROPOSED LEVEL
 - TOP OF WALL LEVEL

Drawing Title:
Landscape Plan - Ground Floor

DWG No: LDA-01

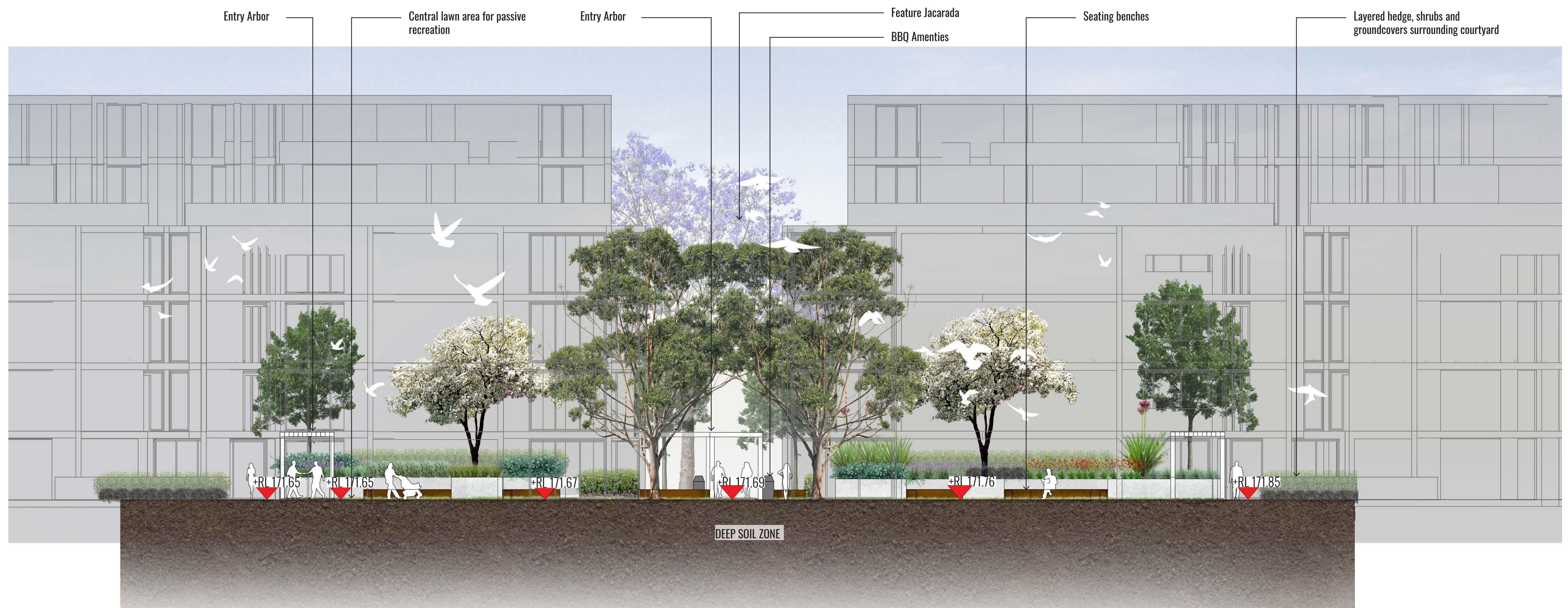
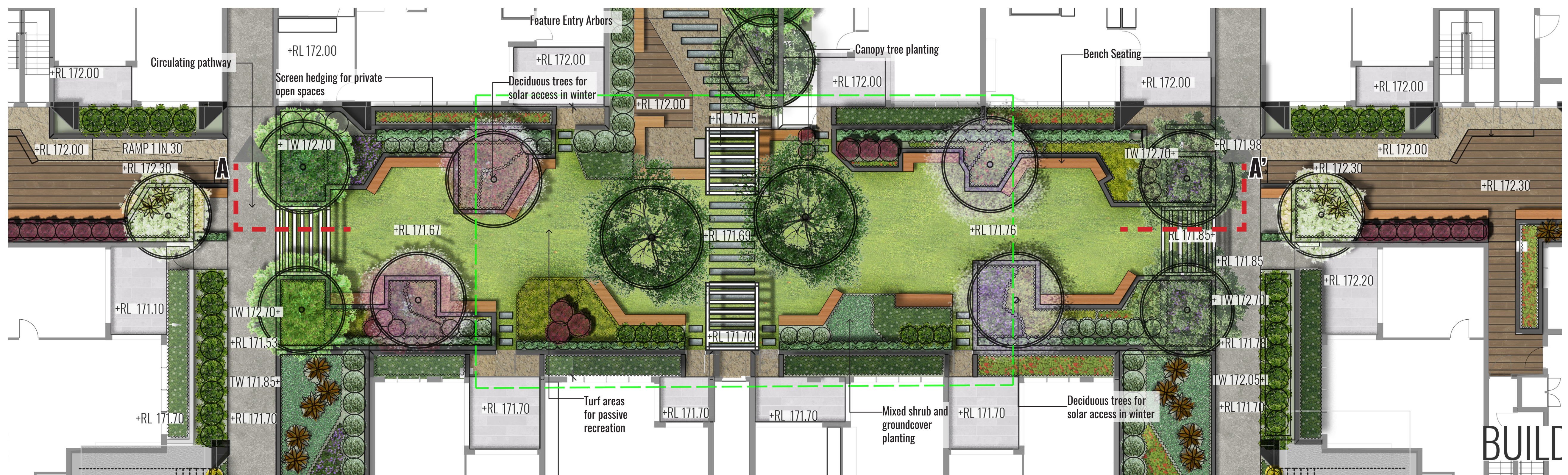
GEOSCAPES
LANDSCAPE ARCHITECTS
Suite 215, 284 Victoria Av, Chatswood NSW 2067 Ph. (02) 9411 1485
www.geoscapes.com.au
ABN 84 620 205 781 ACN 620 205 781








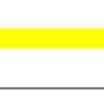









Architect:
ALEKSANDAR
PROJECTS

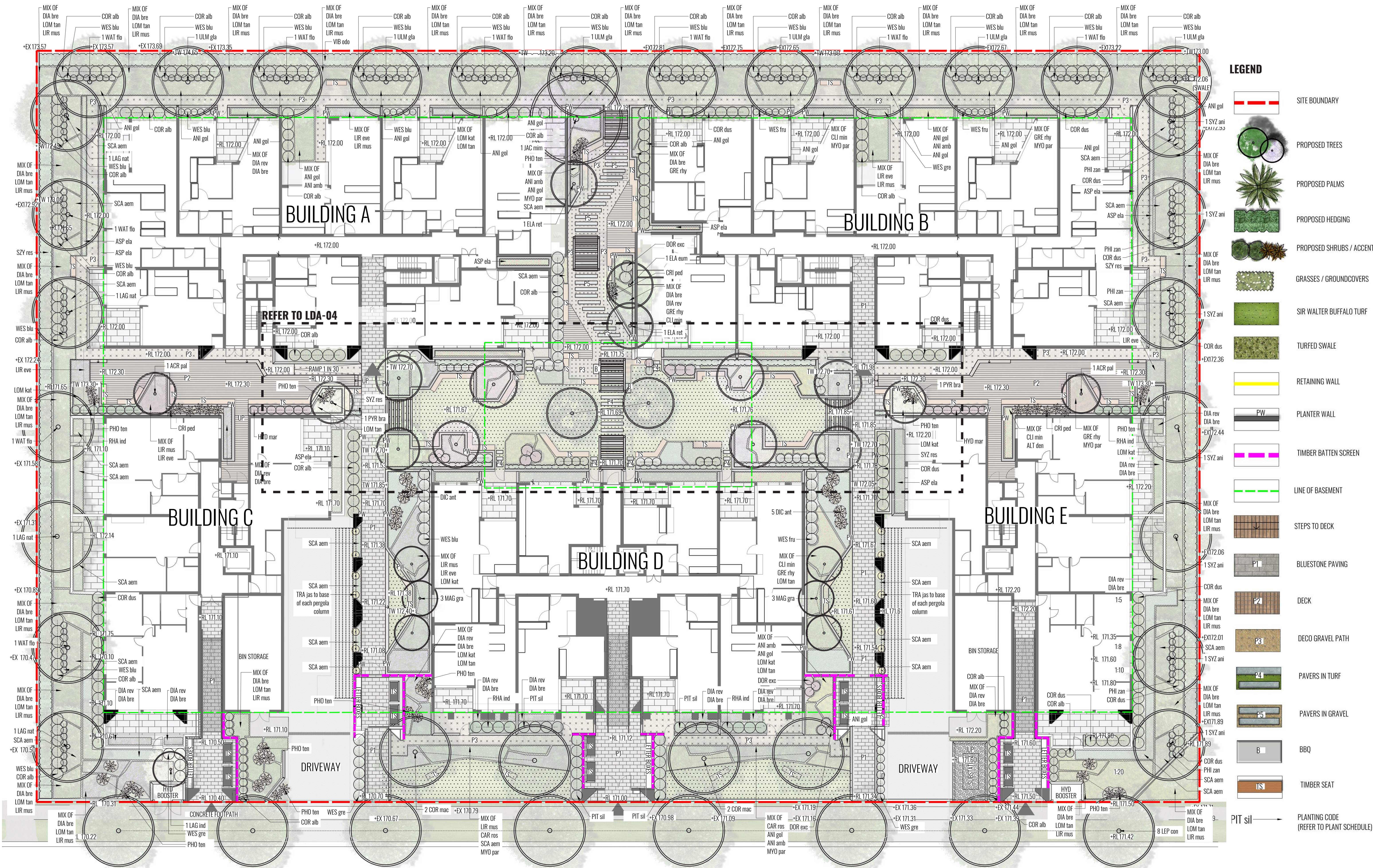
Client:
STATEWIDE
PLANNING

Scale: 1:150 @ A1
1:300 @ A3
Date: 26.03.2021
Job Number: 181101
Project: 22-32 Park Avenue
Waitara, NSW 8077

Revision		FOR DEVELOPMENT APPLICATION			
Rev	Date	Description	Drawn	Checked	
G	09.03.21	REVISED DA	KC	BG	
H	24.03.21	REVISED DA	KC	BG	
I	25.03.21	REVISED DA	KC	BG	
J	26.03.21	REVISED DA	KC	BG	



- | LEGEND | |
|---|---------------------------|
|  | SITE BOUNDARY |
|  | PROPOSED TREES |
|  | PROPOSED PALMS |
|  | PROPOSED HEDGING |
|  | PROPOSED SHRUBS / ACCENTS |
|  | GRASSES / GROUNDCOVERS |
|  | SIR WALTER BUFFALO TURF |
|  | TURFED SWALE |
|  | RETAINING WALL |
|  | PLANTER WALL |
|  | TIMBER BATTEN SCREEN |
|  | LINE OF BASEMENT |
|  | STEPS TO DECK |
|  | BLUESTONE PAVING |
|  | DECK |
|  | DECO GRAVEL PATH |
|  | TIMBER SEAT |
| +EX 171.85 | EXISTING LEVEL |
| +RL 171.25 | PROPOSED LEVEL |
| +TW 172.85 | TOP OF WALL LEVEL |



Drawing Title:
Landscape Detailed Plan -Ground Floor

DWG No:

LDA-03

GEOSCAPES
LANDSCAPE ARCHITECTS
Suite 215, 284 Victoria Av, Chatswood NSW 2067 Ph. (02) 9411 1485
www.geoscapes.com.au
ABN 84 620 205 781 ACN 620 205 781

Architect:

ALEKSANDAR
PROJECTS

Client:

STATEWIDE
PLANNING

Scale:
1:150 @ A1
1:300 @ A3

Date:
26.03.2021

Job Number:
181101

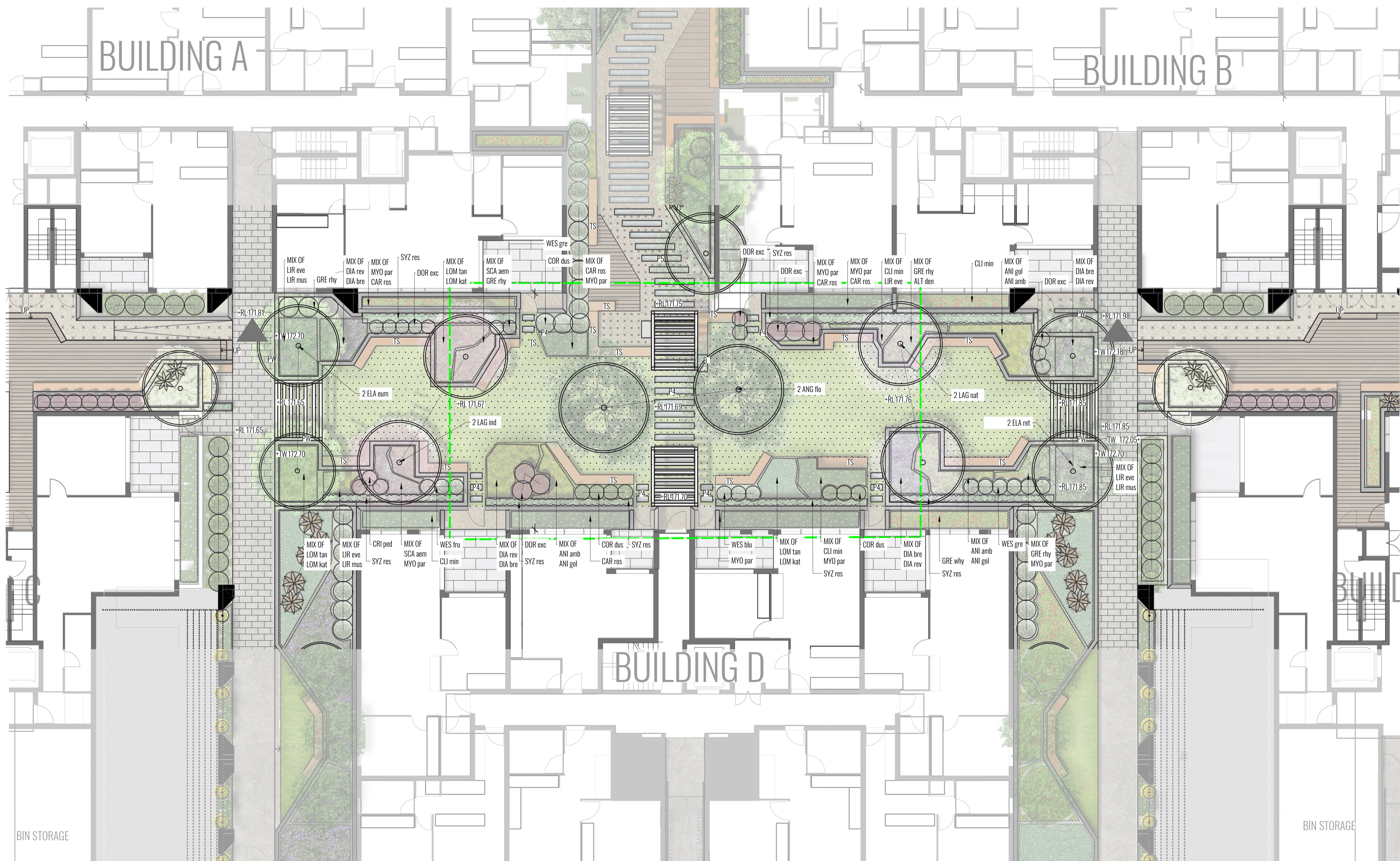
North:
N

Project:

22-32 Park Avenue

Wairata, NSW 8077

Revision			FOR DEVELOPMENT APPLICATION	
Rev	Date	Description	Drawn	Checked
G	09.03.21	REVISED DA	KC	BG
H	24.03.21	REVISED DA	KC	BG
I	25.03.21	REVISED DA	KC	BG
J	26.03.21	REVISED DA	KC	BG



LEGEND

- SITE BOUNDARY
- PROPOSED TREES
- PROPOSED PALMS
- PROPOSED HEDGING
- PROPOSED SHRUBS / ACCENTS
- GRASSES / GROUNDCOVERS
- SIR WALTER BUFFALO TURF
- TURFED SWALE
- RETAINING WALL
- PLANTER WALL
- TIMBER BATTEN SCREEN
- LINE OF BASEMENT
- STEPS TO DECK
- BLUESTONE PAVING
- DECK
- DECO GRAVEL PATH
- PAVERS IN TURF
- PAVERS IN GRAVEL
- BBQ
- TIMBER SEAT

Drawing Title:
**Landscape Detailed Plan - Ground Floor
Communal Area**
DWG No:

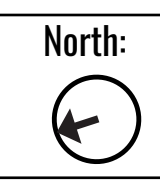
LDA-04

GEOSCAPES
LANDSCAPE ARCHITECTS
Suite 215, 284 Victoria Av, Chatswood NSW 2067 Ph. (02) 9411 1485
www.geoscapes.com.au
ABN 84 620 205 781 ACN 620 205 781

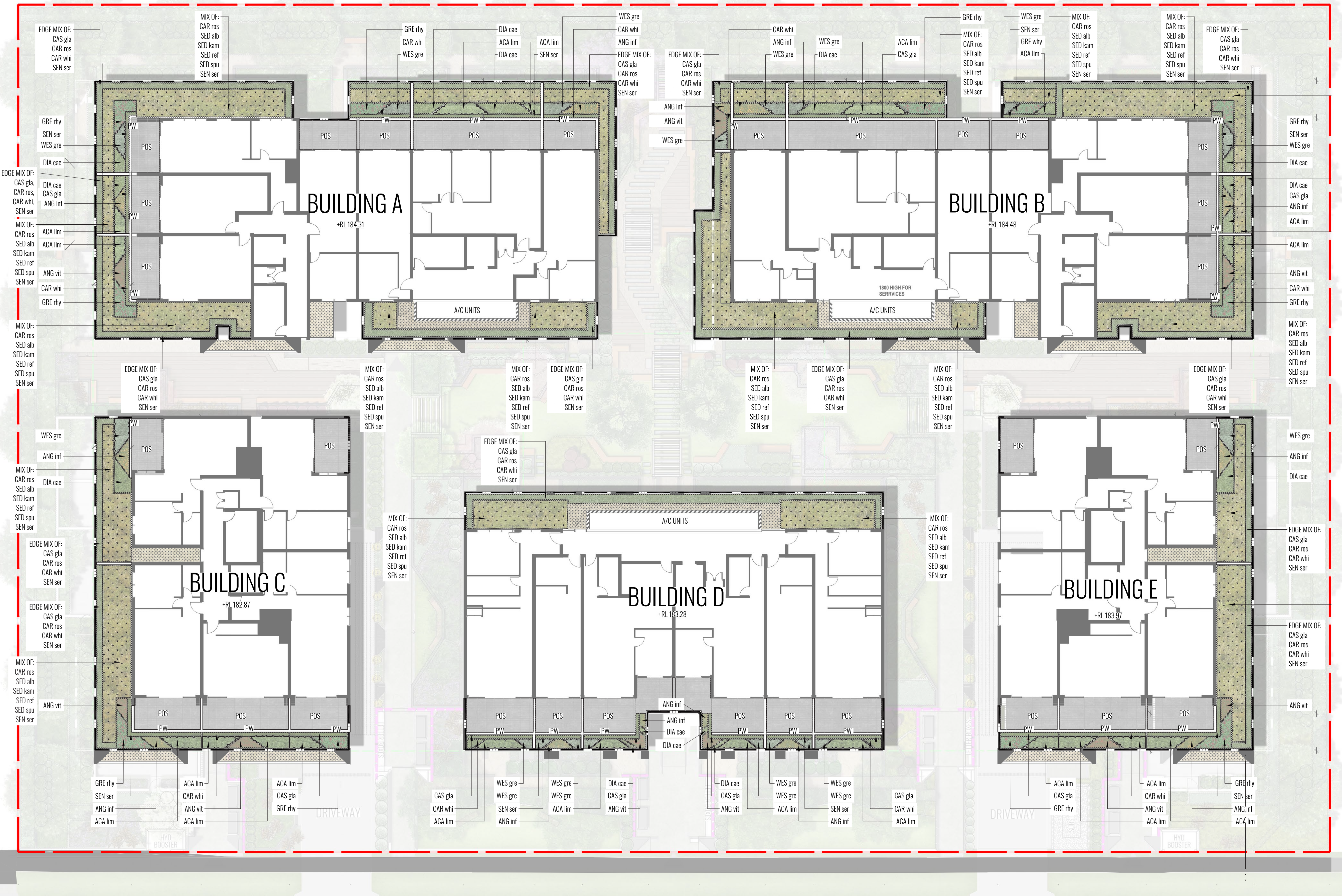
Architect:
**ALEKSANDAR
PROJECTS**

Client:
**STATEWIDE
PLANNING**

Scale: 1:100@ A1
1:200@ A3
Date: 26.03.2021
Job Number: 181101
Project: 22-32 Park Avenue
Waitara, NSW 2077



Revision			FOR DEVELOPMENT APPLICATION	
Rev	Date	Description	Drawn	Checked
G	09.03.21	REVISED DA	KC	BG
H	24.03.21	REVISED DA	KC	BG
I	25.03.21	REVISED DA	KC	BG
J	26.03.21	REVISED DA	KC	BG



LEGEND

SITE BOUNDARY

GLASS BALUSTRADE

HEDGING SHRUBS

EXTENSIVE ROOF GARDEN
GROUND COVER MIX

GROUND COVERS
AND GRASSES

PLANTER WALLS

PEBBLE MULCH

PAVED PRIVATE OPEN
SPACE

8 PIT sil

PLANT LABEL

PARK AVENUE

Drawing Title:
Landscape Detailed Plan - Level 5

DWG No:

LDA-05

GEOSCAPES
LANDSCAPE ARCHITECTS

Suite 215, 284 Victoria Av, Chatswood NSW 2067 Ph. (02) 9411 1485
www.geoscapes.com.au
ABN 84 620 205 781 ACN 620 205 781

Architect:

ALEKSANDAR
PROJECTS

Client:



Scale:
1:150 @ A1
1:300 @ A3

Date:
26.03.2021

Job Number:
181101

North:

Project:

22-32 Park Avenue

Waitara, NSW 8077

Revision			FOR DEVELOPMENT APPLICATION	
Rev	Date	Description	Drawn	Checked
G	09.03.21	REVISED DA	KC	BG
H	24.03.21	REVISED DA	KC	BG
I	25.03.21	REVISED DA	KC	BG
J	26.03.21	REVISED DA	KC	BG

Maintenance Plan

General

Maintenance shall mean the care and maintenance of the landscape works by accepted horticultural practice as rectifying any defects that become apparent in the landscape works under normal use. The landscape contractor shall attend the site on a **weekly basis** to maintain the landscape works commencing from practical completion.

Standards

All grown or purchased plant stock must conform to all the conditions and requirements given in NATSPEC Guide: Specifying Trees. Soils to be in accordance with AS4419, mulching composts and conditioners to be in accordance with AS4454. Soils should conform to best practice specifications as listed in the Landscape Soils Handbook (Simon Leake & Elke Haege 2017).

Rubbish Removal

The Landscape Contractor shall undertake rubbish removal from the site on a **weekly basis** to ensure the site remains in tidy condition.

Weed Eradication

Weed growth that may occur in grassed, planted or mulched areas is to be removed using environmentally acceptable methods i.e. non-residual glyphosate herbicide (e.g. 'Roundup', applied in accordance with the manufacturer's direction.

Tree Replacement

Trees shall show signs of healthy vigorous growth and be free from disease and not exhibit signs of stress prior to handover to the client. Any trees or plant that die or fail to thrive, or are damaged or stolen will be replaced. Replacement material shall have the initial maintenance period extended in accordance with the landscape contract conditions. Trees and plant materials shall be equal to the minimum requirements of species specified and approved material delivered to site. Should the condition decline from the approved sample the Superintendent reserves the right to reject the tree / plants. Frequency: as required.

Stakes

Adjust and/or replace stakes and ties where required. Remove staking and guying when instructed by the Superintendent

Pruning

Selective pruning may be required during the establishment period to promote a balanced canopy structure. These activities shall be carried out to the best horticultural and industry practice. All pruned material is to be removed from site.

Mulched Surfaces

All planter beds and garden areas shall have a minimum depth of 75mm organic mulch. All mulch is to be free of deleterious matter such as soil, weeds, sticks and should conform to AS 4454. Mulched surfaces are to be kept clean and tidy and free of any deleterious material and foreign matter. Reinstate depths to a uniform level of 75mm with mulch as specified, mulch to be free of any wood material impregnated with CCA or similar toxic treatment. Top up mulch levels prior to handover to client & estate management.

Watering

Implement an appropriate hand watering regime in areas not irrigated in association with current watering programme to maintain plant health and vigour. The program shall reflect seasonal conditions and plant species. Frequency: Weekly or as required.

Soil In Natural Ground

Non-Australian native garden beds to have soil installed consisting of 50% existing site topsoil and 50% new topsoil equal or equivalent to 'Organic Garden Mix' as supplied by Australian Native Landscapes. Australian native garden beds to have soil installed consisting of 50% existing site topsoil and 50% new topsoil equal or equivalent to 'Native Low 'P' Mix' as supplied by Australian Native Landscapes. Soil to conform to AS4419 refer to typical detail.

Pest and Disease Control

The Landscape Contractor shall spray for pests and disease infestations when the pest and fungal attack has been positively identified and when their populations have increased to a point that will become detrimental to plant growth. Apply all pesticides to manufacturer's directions. Frequency: weekly inspection

Fertilising

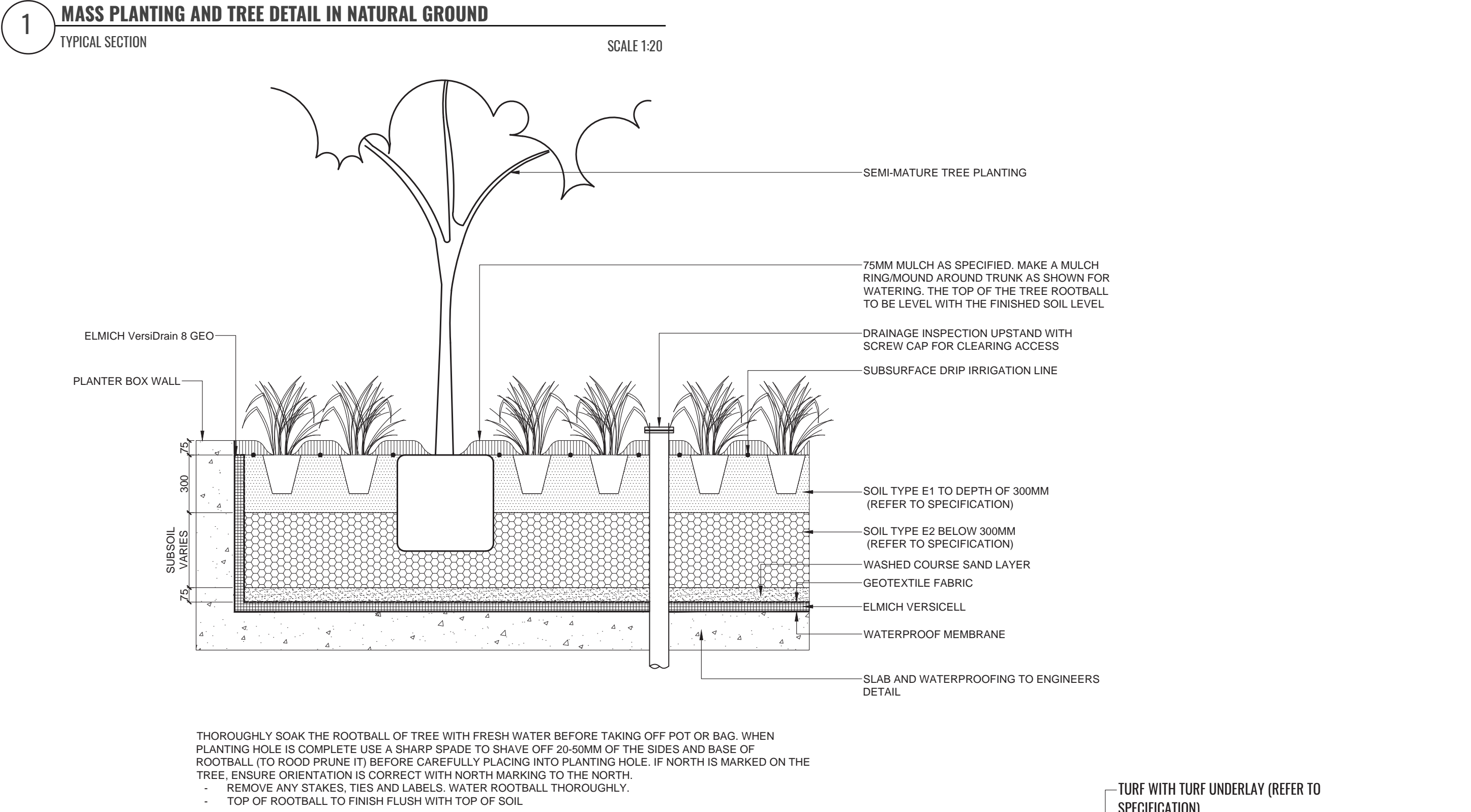
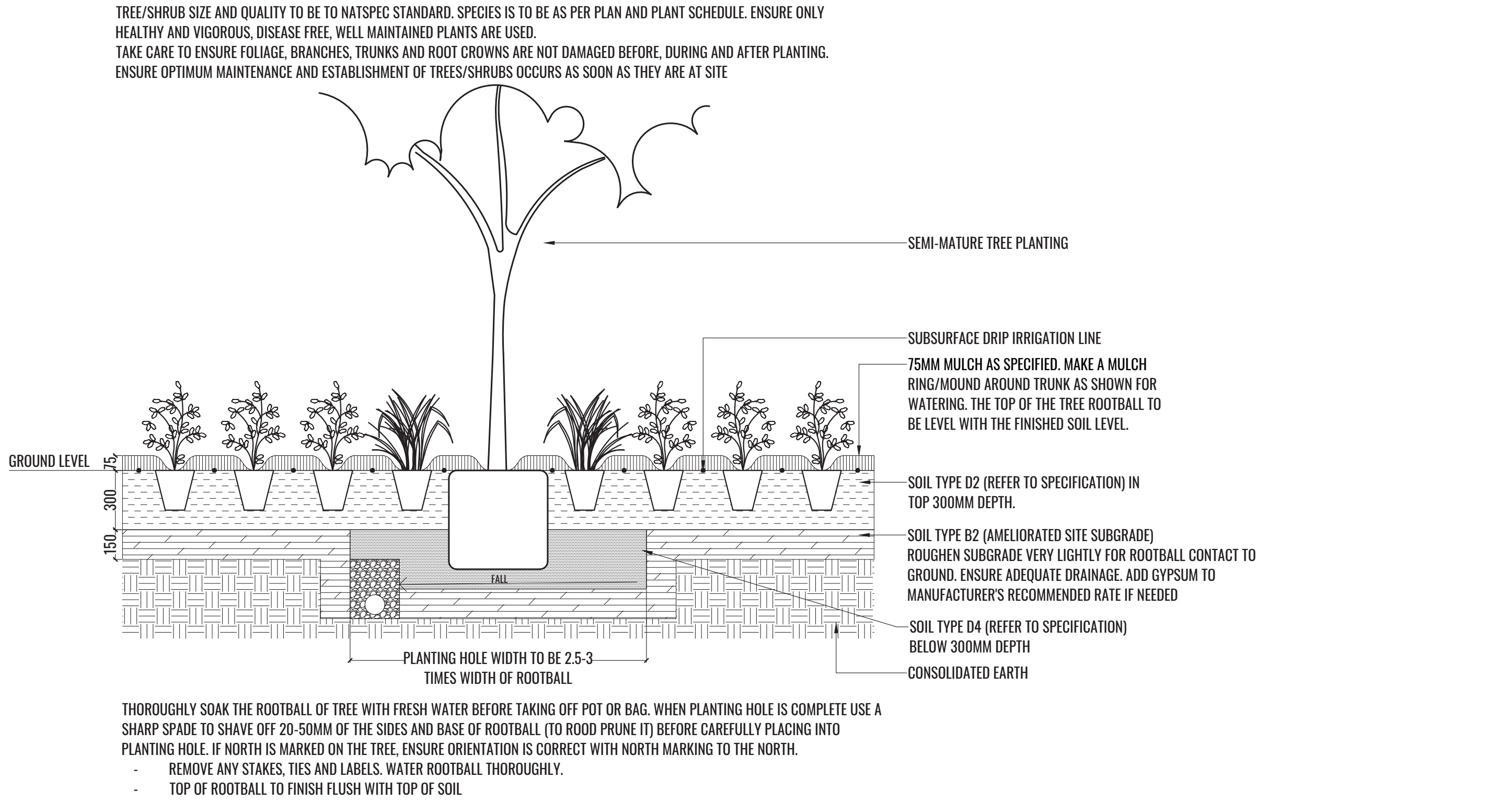
Generally check for signs of nutrient deficiencies (yellowing of leaves, failure to thrive), and adapt fertiliser regime to suit. Fertiliser should be applied at the beginning and the end of the (summer) growing season.

Irrigation

At client discretion, a sub surface dripper style, electrically automated self timed irrigation system is to be supplied to all garden bed areas and planter container. Regular checks are to be made to ensure continued successful operation. The Landscape Contractor shall be responsible for coordination and engagement of a specialist irrigation designer and installation contractor to design, supply and install an automatic subterranean drip irrigation system to all raised planter beds.

The irrigation system will need to provide designated landscaped areas with enough water for vigorous healthy plant growth. As a general rule landscaped areas will need 20-25mm, species dependant, of water per week. The landscape Contractor will need to monitor natural rainfall using a rain switch in order to set irrigation flow rates accordingly on a monthly basis.

Typical Landscape Details



Drawing Title:
Landscape Details & Specifications

DWG No:

LDA-06

GEOSCAPES
LANDSCAPE ARCHITECTS
Suite 215, 284 Victoria Av, Chatswood NSW 2067 Ph. (02) 9411 1485
www.geoscapes.com.au
ABN 84 620 205 781 ACN 620 205 781

Architect:

ALEKSANDAR
PROJECTS

Client:

STATEWIDE
PLANNING

Scale:	Date:	Job Number:	North:	Revision					FOR DEVELOPMENT APPLICATION	
AS SHOWN	26.03.2021	181101	N/A	Rev	Date	Description	Drawn	Checked		
Project: 22-32 Park Avenue Waitara, NSW 2077				G	09.03.21	REVISED DA	KC	BG		
				H	24.03.21	REVISED DA	KC	BG		
				I	25.03.21	REVISED DA	KC	BG		
				J	26.03.21	REVISED DA	KC	BG		

GF Indicative Landscape Planting Schedule

CODE	BOTANICAL NAME	COMMON NAME	MATURE HEIGHT	NATIVE	SIZE	PLANTING DENSITY	QTY*
	Street Trees						
LEP con	<i>Leptospermum confertus</i>	Brush Box	15m	✓	200L	As Shown	8
	Trees						
ACR pal	<i>Acer palmatum</i>	Japanese Maple	4m		75L	As Shown	2
ANG flo	<i>Angophora floribunda</i>	Rough barked Appled	15m	✓	75L	As Shown	2
COR mac	<i>Corymbia maculata</i>	Spotted Gum	30m	✓	75L	As Shown	4
ELA eum	<i>Elaeocarpus eumundi</i>	Elaeocarpus	10m	✓	75L	As Shown	3
ELA ret	<i>Elaeocarpus reticulatus 'Prima Donna'</i>	Blueberry Ash	9m	✓	75L	As Shown	4
LAG ind	<i>Lagerstroemia indica</i>	Crepe myrtle	8m		75L	As Shown	3
LAG nat	<i>Lagerstroemia 'Natchez'</i>	White Crepe Myrte	6m		75L	As Shown	6
JAC mim	<i>Jacaranda mimosifolia</i>	Blue Jacaranda	15m		75L	As Shown	1
PYR bra	<i>Pyrus calleryana 'Bradford'</i>	Ornamental Pear	12m		75L	As Shown	2
SYZ ani	<i>Syzygium anisatum</i>	Aniseed Myrtle	30m	✓	75L	As Shown	7
ULM gla	<i>Ulmus glabra 'Lutescens'</i>	Golden Elm	12m		75L	As Shown	6
WAT flo	<i>Waterhousea floribunda</i>	Weeping Lily Pily	10m	✓	75L	As Shown	9
	Shrubs						
CRI ped	<i>Crinum pedunculatum</i>	Swamp Lily	3m	✓	200MM	As Shown	
COR alb	<i>Correa alba</i>	White Correa	1.5m	✓	200MM	As Shown	
COR dus	<i>Correa 'Dusky Bells'</i>	Native Fuchsia	1.5m	✓	200MM	As Shown	
DOR exc	<i>Doryanthes excelsa</i>	Gymea Lily	3m	✓	200MM	As Shown	
HYD mar	<i>Hydrangea macrophylla</i>	Bigleaf Hydrangea	3m		200MM	As Shown	
MUR pan	<i>Murraya paniculata</i>	Orange Jasmine	2m		200MM	As Shown	
PHI xan	<i>Philodendron xanadu</i>	Philodendron	1.5m		200MM	As Shown	
RHA ind	<i>Rhapiolepis indica</i>	Indian Hawthorn	3m		200MM	As Shown	
RHA exc	<i>Rhapis excelsa</i>	Broadleaf Lady Palm	4m		200MM	As Shown	
PIT sil	<i>Pittosporum tenuifolium 'Silver Sheen'</i>	Pittosporum 'Silver Sheen'	3m		200mm	As Shown	
PHO ten	<i>Phormium tenax 'Bronze Baby'</i>	Purple Flax	1m		200mm	As Shown	
SYZ res	<i>Syzygium australe 'Resilience'</i>	Lily Pily	5m	✓	200MM	As Shown	
VIB odo	<i>Viburnum odoratissimum</i>	Sweet Viburnum	3m		200MM	As Shown	
WES blu	<i>Westringia 'Blue Gem'</i>	Westringia Blue Gem	1.5m	✓	200MM	As Shown	
WES gre	<i>Westringia fruticosa 'Grey Box'</i>	Westringia Grey Box	0.5m	✓	200MM	As Shown	
WES fru	<i>Westringia fruticosa</i>	Coastal Rosemary	2m	✓	200MM	As Shown	
	Grasses & Groundcovers						
ASP ela	<i>Aspidistra elatior</i>	Cast Iron plant	0.5m		140mm	4/m2	
ALT den	<i>Alternanthera dentata 'Little Ruby'</i>	Alternanthera Little Ruby	0.4m		140mm	4/m2	
ANI gol	<i>Anigozanthos 'gold velvet'</i>	Kangaroo Paw	1m	✓	140mm	4/m2	
ANI amb	<i>Anigozanthos amber velvet</i>	Kangaroo Paw	1m	✓	140mm	4/m2	
CLI min	<i>Clivia miniata</i>	Clivia	0.5m		140mm	4/m2	
DIA bre	<i>Dianella caerulea 'Breeze'</i>	Native Flax	0.6m	✓	140mm	5/m2	
DIA rev	<i>Dianella revoluta</i>	Blueberry Lily	0.6m	✓	140mm	5/m2	
DIC ant	<i>Dicksonia antarctica</i>	Man Fern	4m	✓	140mm	As Shown	
GRE rhy	<i>Grevillea rhyolitica</i>	Grevillea Cherry Cluster	0.5m	✓	140mm	4/m2	
LOM kat	<i>Lomandra longifolia 'Katrinus Deluxe'</i>	Lomandra Katrinus Deluxe	0.7m	✓	140mm	5/m2	
LOM tan	<i>Lomandra longifolia 'Tanika'</i>	Spiny Mat-Rush	0.6m	✓	140mm	5/m2	
LIR eve	<i>Liriope evergreen 'Giant'</i>	Lily Turf	0.5m	✓	140mm	4/m2	
LIR mus	<i>Liriope muscari</i>	Lily Turf	0.4m	✓	140mm	4/m2	
CAR ros	<i>Carpobrotus rossii</i>	Pigface	0.4m	✓	140mm	7/m2	
MYO par	<i>Myoporum parvifolium</i>	Creeping boobialla	0.1m	✓	140mm	7/m2	
SCA aem	<i>Scaevola aemula</i>	Purple Fusion	0.2m	✓	140mm	7/m2	
	Climbers						
TRA jas	<i>Trachelospermum jasminoides</i>	Star Jasmine	N/A		200mm	As shown	

Rooftop Landscape Planting Schedule

CODE	BOTANICAL NAME	COMMON NAME	MATURE HEIGHT	NATIVE	SIZE	PLANTING DENSITY
	Shrubs					
ACA lim	<i>Acacia cognata 'Limelight'</i>	River Wattle	0.5 - 1m	✓	200MM	0.75m Centres
WES gre	<i>Westringia fruticosa 'Grey Box'</i>	Westringia Grey Box	0.5m	✓	200MM	0.30m Centres
	Grasses & Groundcovers					
ANI inf	<i>Anigozanthos 'Bush Inferno'</i>	Kangaroo Paw	0.6	✓	140mm	5/m2
ANI vit	<i>Anigozanthos 'Bush Vitality'</i>	Kangaroo Paw	0.5	✓	140mm	6/m2
CAS gla	<i>Casuarina glauca 'Cousin It'</i>	Cousin It	0.15m	✓	140mm	3/Lm
CAR whi	<i>Carpobrotus rossii 'White Hot'</i>	Pigface	0.2m	✓	140mm	3/Lm
Sen blu	<i>Senecio serpens</i>	Blue Chalksticks	0.2m		140mm	3/Lm
GRE rhy	<i>Grevillea rhyolitica x juniperina 'Cherry Cluster'</i>	Grevillea Cherry Cluster	0.5m	✓	140mm	4/m2
DIA cae	<i>Dianella caerulea 'Breeze'</i>	Native Flax Lily	0.6m	✓	140mm	5/m2
	Extensive Green Roof					
CAR ros	<i>Carpobrotus rossii</i>	Native Pigface	0.2m	✓	140mm	7/m2
SED alb	<i>Sedum album</i>	White Stonecrop	0.2m		140mm	7/m2
SED kam	<i>Sedum kamtschaticum</i>	Orange Stonecrop	0.2m		140mm	7/m2
SED ref	<i>Sedum reflexum</i>	Reflexed Stonecrop	0.2m		140mm	7/m2
SED spu	<i>Sedum spurium</i>	Two-row Stonecrop	0.2m		140mm	7/m2
SEN ser	<i>Senecio serpens</i>	Blue Chalksticks	0.2m		140mm	7/m2

Planting Images



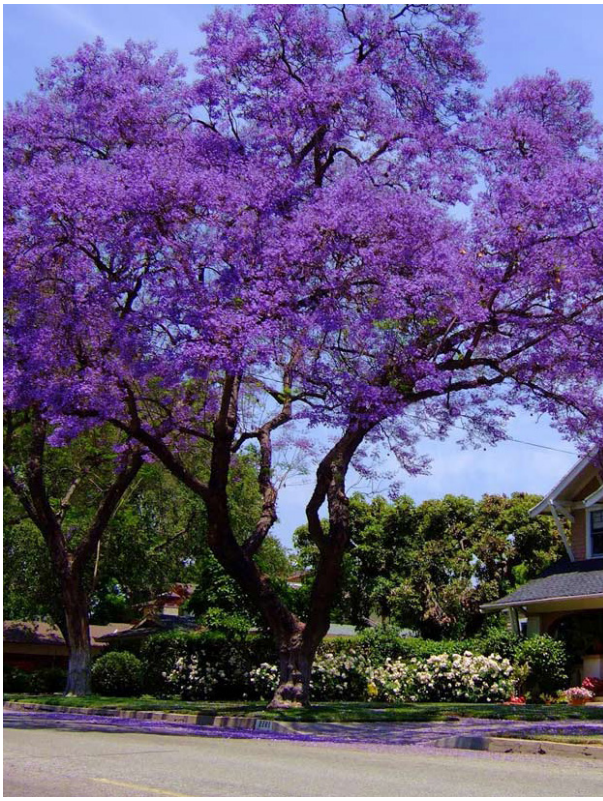
Magnolia grandiflora



Elaeocarpus eumundii



Lagerstroemia 'Sioux'



Jacaranda mimosifolia



Murraya paniculata



Viburnum odoratissimum



Hydrangea macrophylla



Westringia fruticosa



Trachelospermum jasminoides



Clivia miniata



Alternanthera dentata 'Little Ruby'



Carpobrotus rossii



Anigozanthos 'Amber Velvet'



Senecio serpens

Drawing Title:
Planting Schedule & Imagery

DWG No:

LDA-07

GEOSCAPHES

LANDSCAPE ARCHITECTS

Suite 215, 284 Victoria Av, Chatswood NSW 2067 Ph. (02) 9411 1485
www.geoscapes.com.au
ABN 84 620 205 781 ACN 620 205 781

Architect:

ALEKSANDAR
PROJECTS

Client:

STATEWIDE

PLANNING

Scale:	Date:	Job Number:	North:	Revision					FOR DEVELOPMENT APPLICATION	
				Rev	Date	Description	Drawn	Checked	22-32 Park Avenue Waitara, NSW 2077	
Project:				G	09.03.21	REVISED DA	KC	BG		
				H	24.03.21	REVISED DA	KC	BG		
				I	25.03.21	REVISED DA	KC	BG		
				J	26.03.21	REVISED DA	KC	BG		